

EnzActive

PROTEIN
POWDER

A prebiotic feed supplement with antioxidant and absorptive properties.

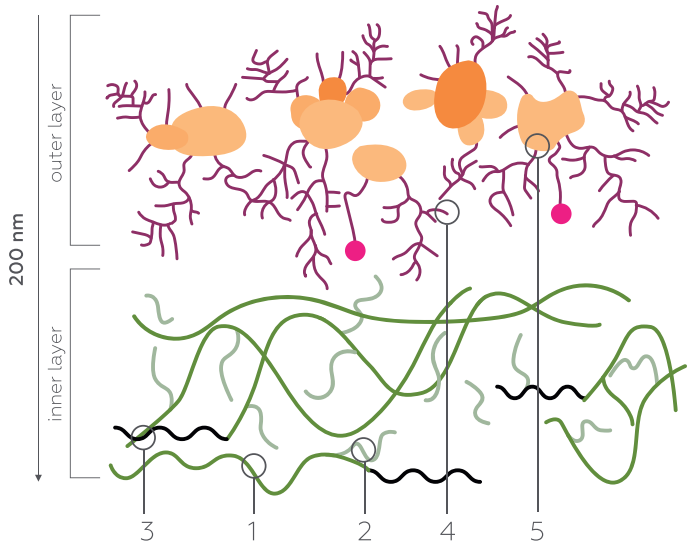
Our unique *Saccharomyces cerevisiae* strain is grown using a specially developed technology that provides exceptionally high natural antioxidant action.



EnzActive PROTEIN POWDER

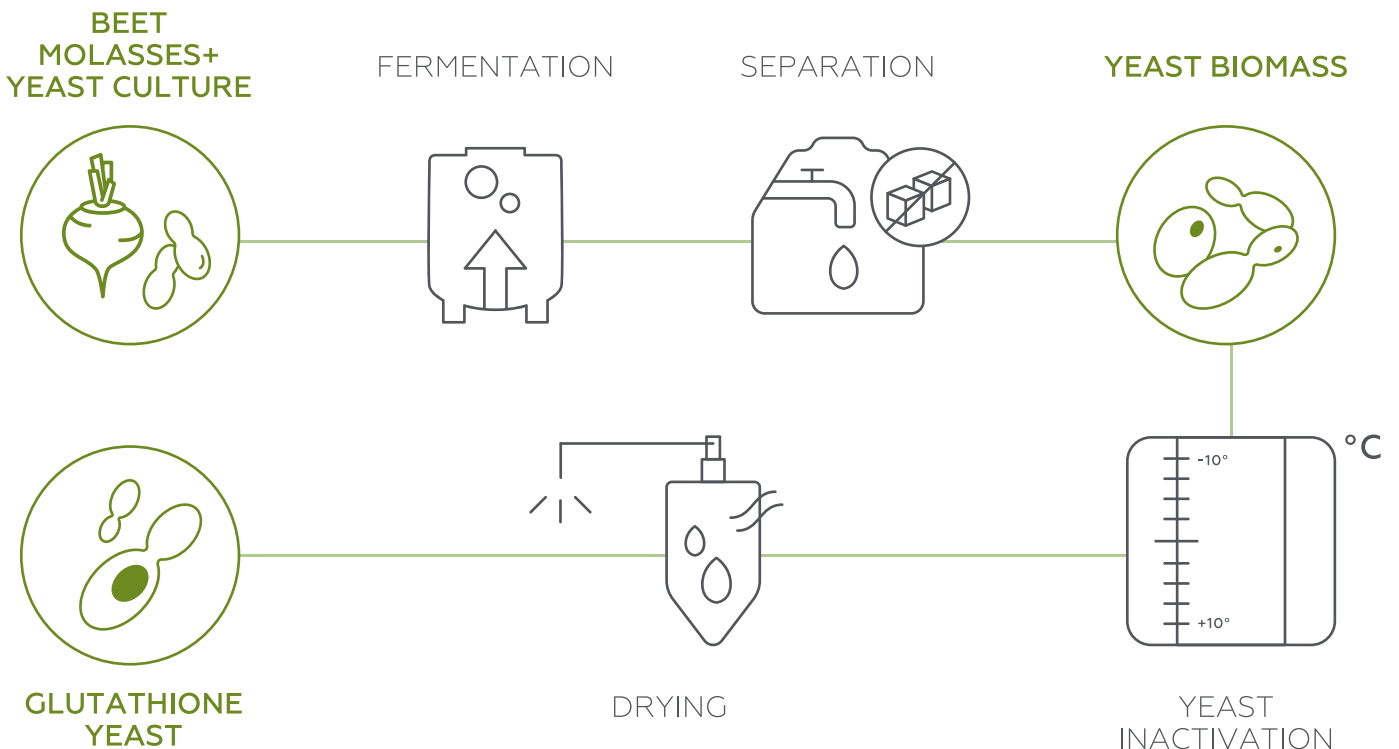
Prebiotic feed supplement containing cell walls with their components and intracellular content rich in biologically active substances, and enzymatically active form of glutathione.

EnzActive Protein Powder cell walls contain beta-glucans, mannan-oligosaccharides, proteins, and chitosan.

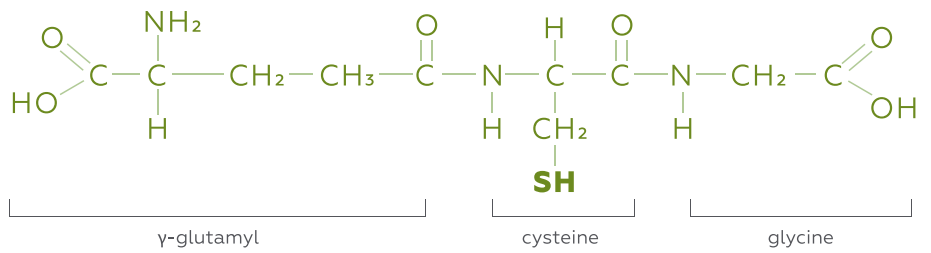


- 1 β -(1,3)-GLUCANS**
- insoluble
- 50% of the weight of cell wall
- 2 β -(1,6)-GLUCANS**
- insoluble
- 10% of the weight of cell wall
- 3 CHITIN**
- insoluble
- 1 – 3% of the weight of cell wall
- 4 MANNOSE – SOLUBLE**
- 5 PROTEIN**

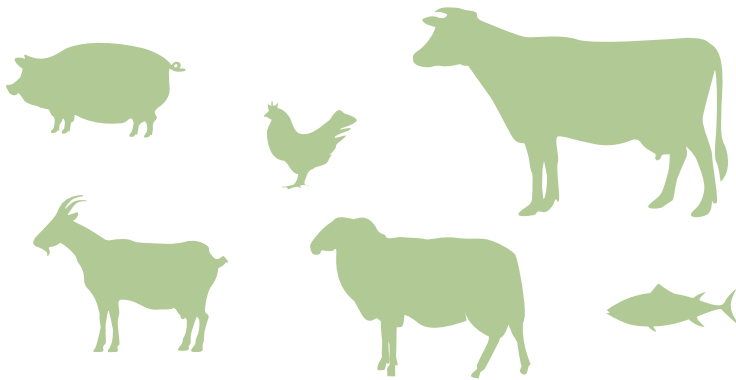
PRODUCTION PROCESS



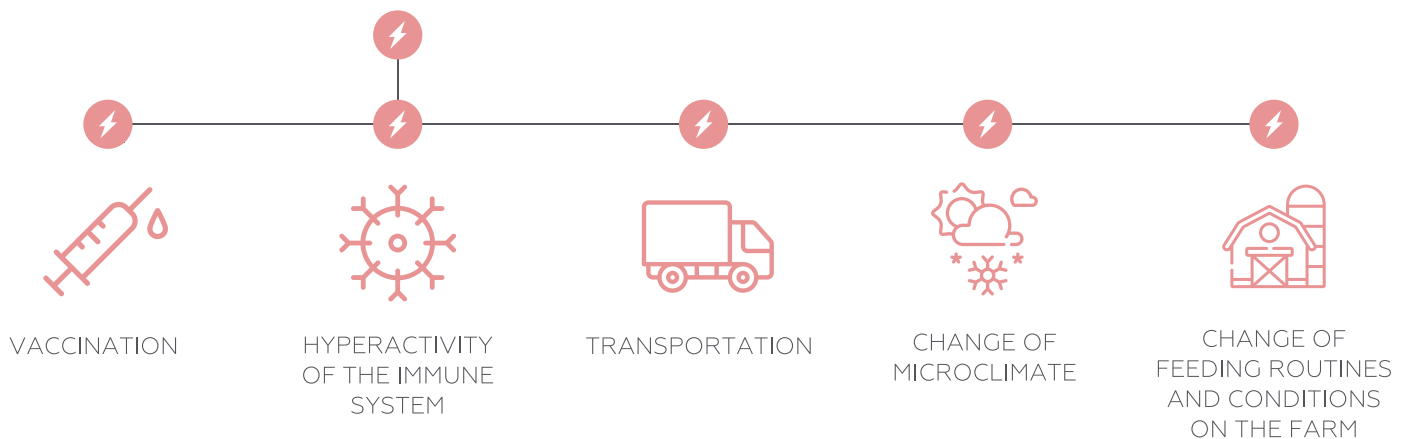
EnzActive Protein Powder contains glutathione. It is a small tripeptide consisting of three amino acids: cysteine, gamma-glutamyl, and glycine.



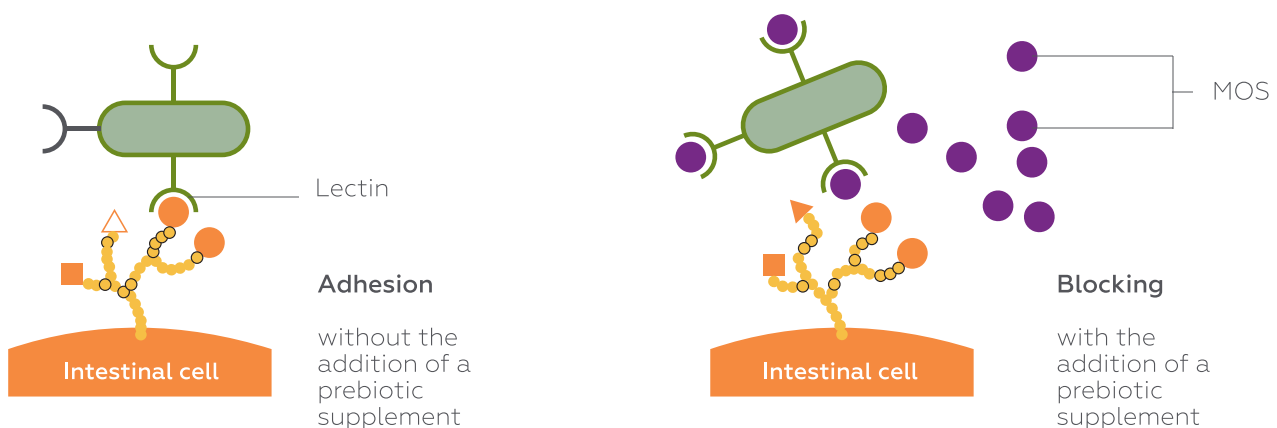
STRESS FACTORS



Glutathione plays a key role in protecting cells from oxidative stress. It neutralises free radicals before they damage the cells in animals' bodies.



ACTION OF MANNANS



BENEFITS ASSOCIATED WITH THE USE OF EnzActive Protein powder:

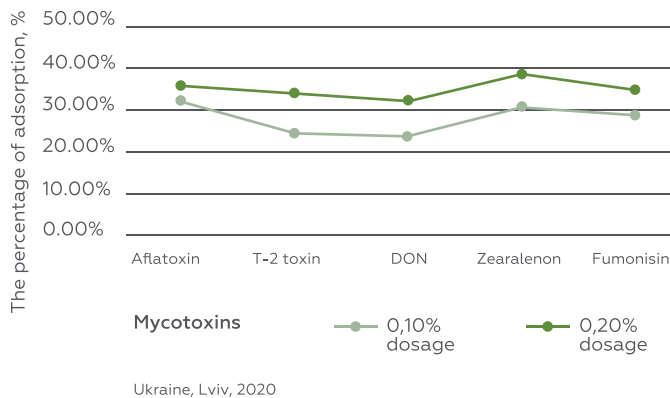
+ reduction of the impact of toxins and pathogens

+ antioxidant action and strengthened natural protection

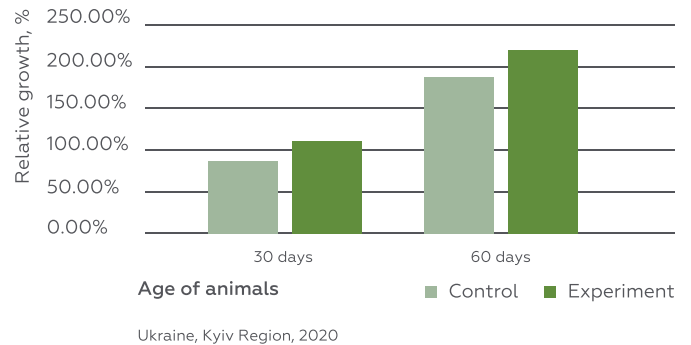
+ improved performance and overall health status

+ a natural solution to increase feed efficiency

ADSORPTIVE EFFICIENCY OF THE FEED SUPPLEMENT



CALF PERFORMANCE



RECOMMENDED DOSAGES AND USE

It is recommended that EnzActive Protein Powder be fed using existing mixing technology to ensure even distribution and obtain desired homogeneity.

Add to balanced compound feed throughout the growing period (from the beginning to the end) in a dose of:

500 – 2,000 g per t of feed for farm animals and poultry depending on the species of animals/poultry and feed type.

*The above recommended dosages should be adjusted with reference to the physiological condition, age, and diet of animals and poultry.
Continuous, unlimited access to water



enzym@enzym.com.ua
+38 (032) 298 98 28
feed.enzym.com.ua
www.enzym.com.ua



"Enzym Company" PJSC,
232 Lychakivska str. Lviv,
79014, Ukraine



ISO 22000

